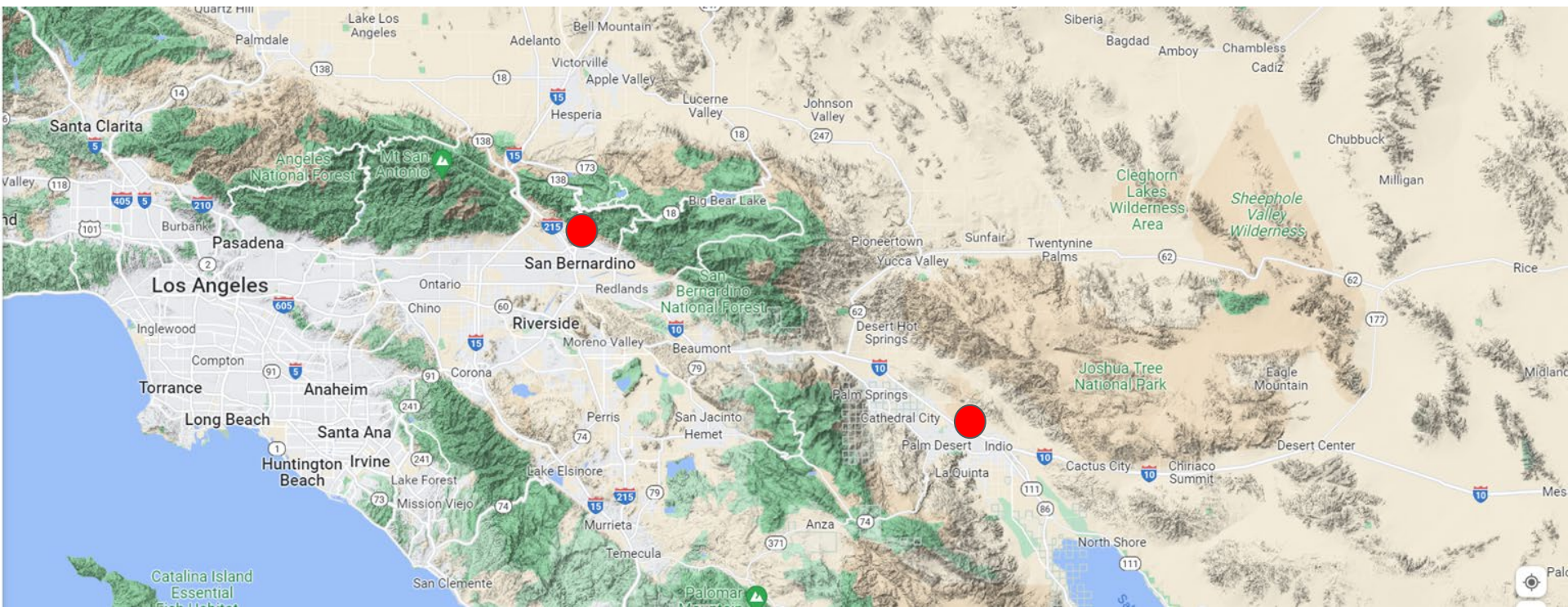




Dr. Jennifer Alford, Director  
Associate Professor, Geography & Environmental Studies  
Associate Director of Research, CSU WATER  
[jennifer.alford@csusb.edu](mailto:jennifer.alford@csusb.edu)

# CSU San Bernardino Campus Locations



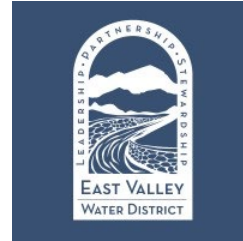
**Community-Agency-University Partnerships**

*Support Best Practices & Innovations through Workforce Development & Student Learning*





# Community-University Partnerships + Workforce Development Across the IE



Geography  
Environmental Studies  
Geology  
Sociology  
Anthropology  
History  
Public Health  
Public Administration  
Cyber Security  
Liberal Studies  
College of Education STEM

Feedback Loops to  
Support Workforce  
Development &  
Water Justice/Resiliency



Provide experiential learning opportunities in partnership with industry practitioners that engage student participants in water focused field research experiences across diverse socio-economic & environmental landscapes.

**CSUN**

CALIFORNIA  
STATE UNIVERSITY  
NORTHBRIDGE



CALIFORNIA STATE UNIVERSITY  
SAN BERNARDINO



**CAL POLY**



CENTER FOR GEOSPATIAL  
SCIENCE & TECHNOLOGY



Institute for  
Watershed  
Resiliency





# WATERTALKS

The California Department of Water Resources (DWR) allocated \$98 million to the Los Angeles-Ventura (LA-V) Funding Area as part of the \$510 million in funding authorized through the Proposition 1 IRWM grant.

- Community Surveys
- Tribal Listening Sessions
- Needs Assessments
- Project Development & Implementation



<https://watertalksca.org/>

We welcome partnerships

Jennifer Alford, PhD  
[jennifer.alford@csusb.edu](mailto:jennifer.alford@csusb.edu)



**Institute** for  
**Watershed**  
**Resiliency**



**FLOWS**  
Field-based Learning,  
Outreach, & Workforce  
Scholarship